

MicroNX

300B

USER'S MANUAL

Reference for safety

Please read this reference carefully and use this unit properly. Reference is for keeping safety and preventing damage of property.

Reference for safety

- Installation
 - Do not install on unstable place.
 - Please keep vent open on bottom cover of control unit.
 - Do not install in a location where exposed a direct ray of light and high and low temp.
 - Please use in a place where temperature is from 0 degree to 40 degree centigrade. Please don't use in high temp and humidity or in dust.

- When working
 - Do not drop or shock while motor is rotating.
 - Do not leave a motor on rotating.
 - Do not turn off power switch when motor is rotating.
 - Please wear protective goggles to protect eyes.

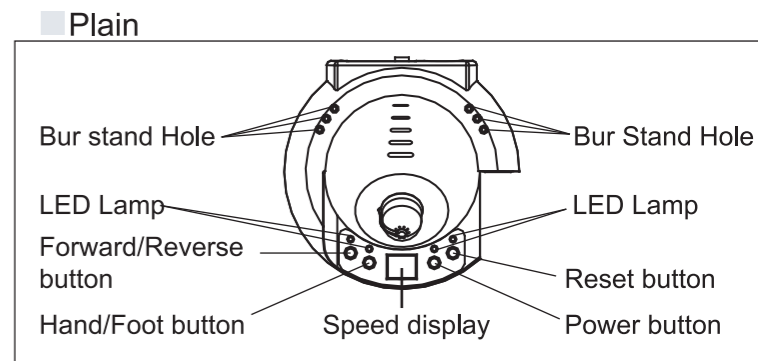
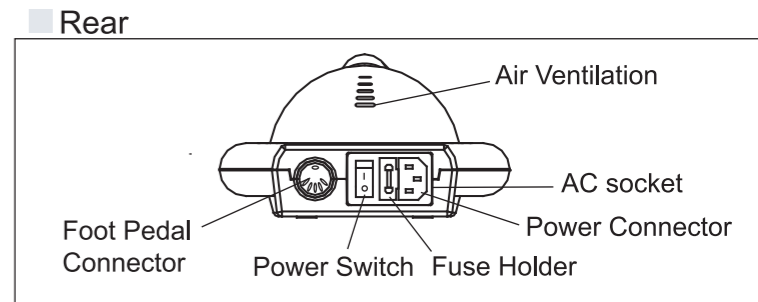
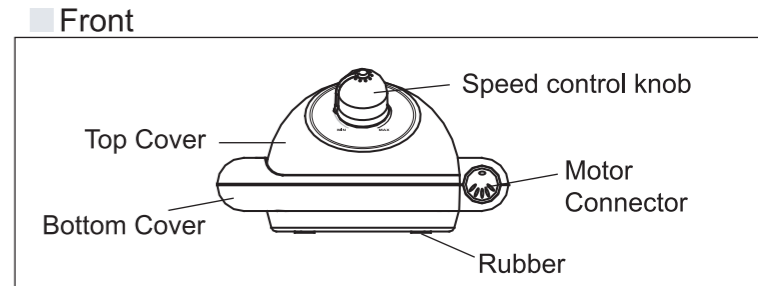
- The others
 - Please prevent the item from food or other substances coming inside
 - Do not drop alcohol or benzene as there is fire danger.
 - Do not assembly, repair, modify recklessly.

Warning/Notice

Warning This mark is used when user's misuse can cause death or severe injury.

Notice This mark is used when user's misuse can cause property loss

Name of part



Components

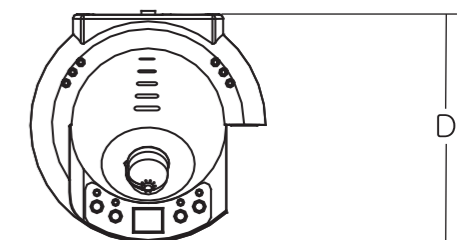
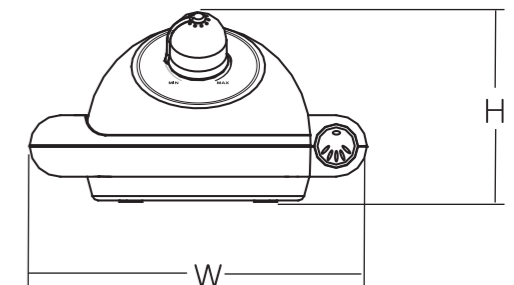
Electric power

Electric connection

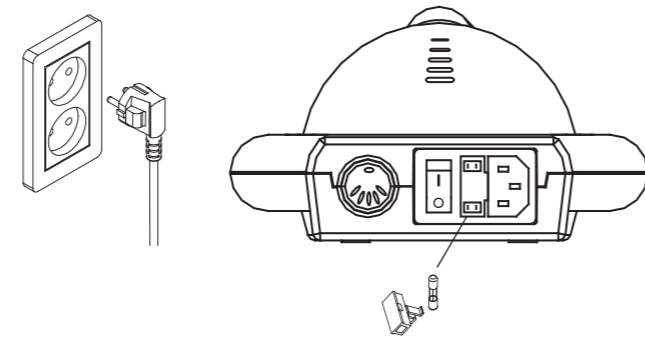
Specification

Control Unit

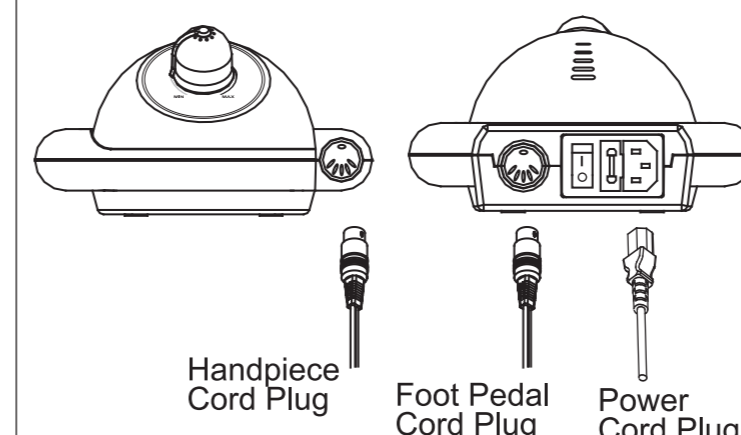
| REF NO. | INPUT POWER SOURCE | MAXIMUM LOAD CURRENT | OUTPUT POWER SOURCE | POWER | FUSE | WEIGHT | DIMENSION (mm) | | |
|--------------|--------------------|----------------------|---------------------|-------|---------|--------|----------------|-----|----|
| | | | | | | | W | D | H |
| Anyxing-300B | 110/240V 50/60Hz | 2A | DC 0 - 30V | 60 W | 250V 3A | 2.2KG | 168 | 168 | 75 |



AC 200~240V, 50/60Hz
AC 100~115V, 50/60Hz



- Main Power
- Please insert power cord to outlet after confirming AC 100~120V 50/60Hz or AC 200~240V 50/60Hz.
 - This unit is set with AC200~240V 50/60Hz when it was manufactured.
 - Fuse Specification
 - 250V 3A

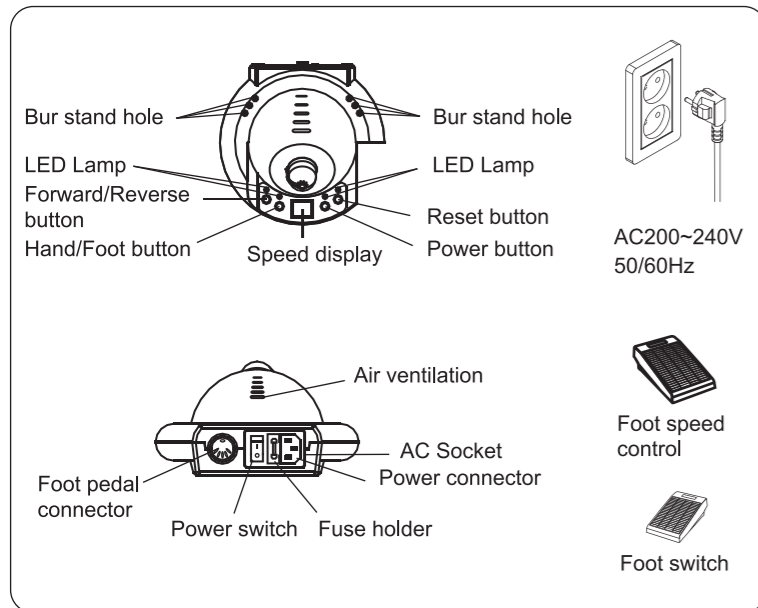


- Please connect cord plug of handpiece to motor connector of control unit after confirming direction.
- Please connect foot-pedal and cord plug of speed control to proper connector on rear of control unit after confirming direction.

- Notice**
- After connection of all cords, please check safety and then insert power cord to an outlet.

-
- ① CONTROL UNIT (1pcs)
 - ② Handpiece(1pcs)
 - ③ Plug-in Cord (1pcs)
 - ④ Foot Speed Control
 - ⑤ On/Off Switch (Optional)
 - ⑥ Rubber Stand(1pcs)
 - ⑦ Power Cord(1pcs)
 - ⑧ Carbon Brush(2 pcs)
 - ⑨ Chuck Rench(1 pcs)

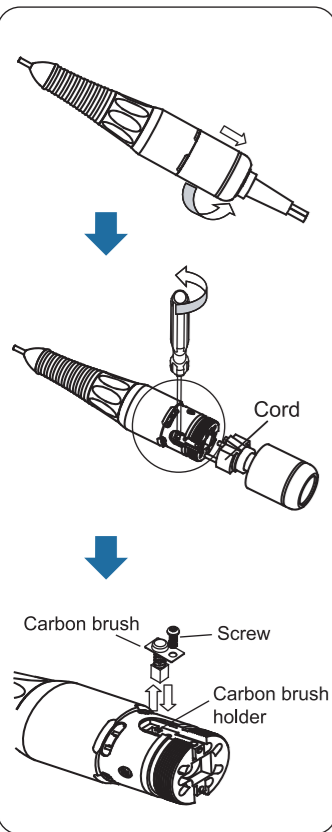
How to operate the control box



- ① Please confirm whether the power switch is turned off.
- ② Please insert power supply cord in an outlet.
- ③ Please put the handle of volume control at 'zero'
- ④ Please turn on the power switch (on the back of the control unit)
- ⑤ Initial function configuration when the power is "ON".

- FWD/REV mode : FWD mode (LED is "Lighting")
- Hand/Foot mode : Hand mode (LED is "Lighting")

Replacement of "Carbon Brush"



- a) After turning off the control unit, please loose the carbon housing cover at the back of handpiece, then disassemble the motor cord.
- b) After loosening the fixing bolt by (+) typed screwdriver, please remove the old carbon brush.
- c) Please put a new carbon brush being careful that brush spring is not caught in a carbon brush holder.
- d) Please insert the motor cord and fasten the carbon housing cover.

※ The replacement period of carbon brush is about 1 year, but it is flexible according to the workload and loads.

How to use "Hand mode".

- a) Please set up the direction of motor rotation by putting FWD/REV button.
- b) Please turn the handle of volume control to the right-handed screw, then the motor starts to rotate and set up the speed that you want.
- c) When you need to stop the motor or to reduce rotation speed, turn the handle of volume control to the left-handed screw.

How to use 'Foot mode'

- a) Please confirm whether the power switch is turned off.
- b) Please insert power supply cord in an outlet.
- c) Please put the handle of volume control at 'zero'
- d) Please turn on the power switch.
- e) Please set up 'Foot mode' by putting Hand/Foot mode button. (LED is not lighting when 'Foot Mode')
- f) Please set up the speed that you want by turn right the handle of volume control.
- g) When you step on the foot pedal, the motor rotates.

How to switch 'Foot mode' to 'Hand mode'.

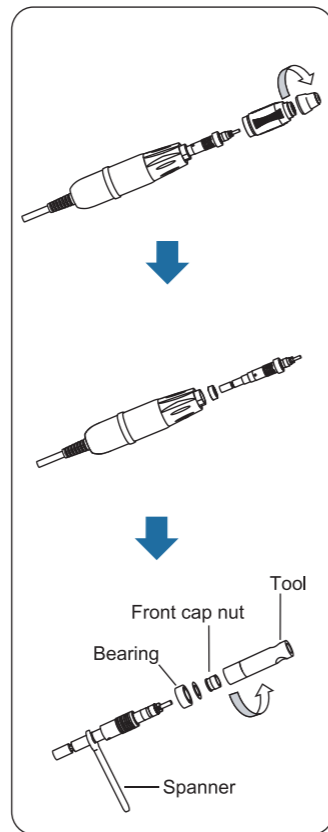
- a) Please stop the motor completely by turning the handle of volume control to the left-handed screw.
- b) Please set up 'Foot Mode' by putting Hand/Foot mode button. (LED is not lighting when 'Foot Mode')
- c) When you step on the foot pedal, the motor rotates.



Notice

- Using for long time at maximum rotation speed can shorten the life of handpiece and control unit.
- Please turn off the power switch after confirming the motor stops completely
- In the case the handpiece is not used for long time, please disconnect the power cord from an outlet.

Replacement of the ball bearing.



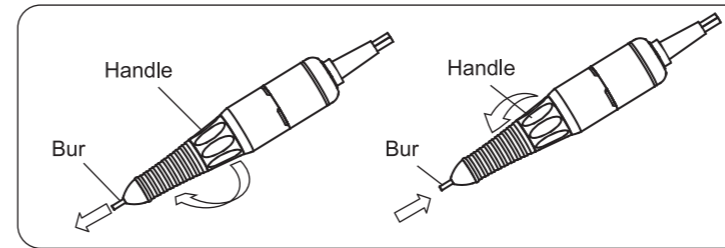
- a) Disassemble the front cap by hands.
- b) Take out a spindle assembly.
- c) By spanner and tool, disassemble the front cap nut and take out bearing and replace.



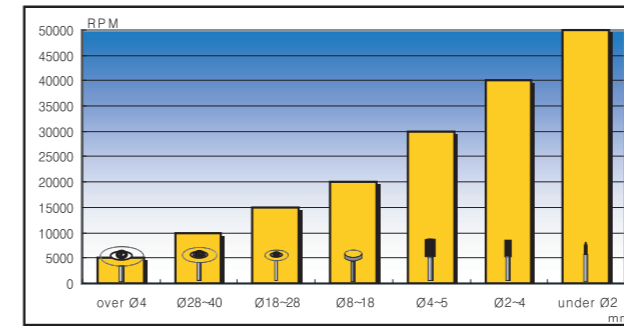
Notice

Please use the handpiece after checking its disorder under idle.

How to treat the handpiece.



Please turn the chuck handle to right-handed screw until sounding 'click', then replace a new 'Bur' and fasten the collect chuck by turning the chuck handle to left-handed screw until sounding 'click'

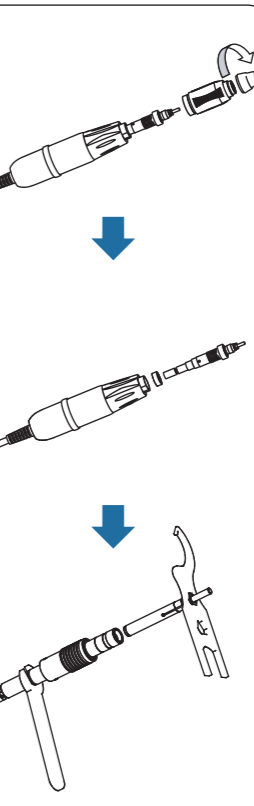


Notice

When using the bur, please observe the recommended rotation speed according to outer diameter.

Trouble and Countermeasure

| Problem | Checking Point | Solution |
|--|---|--|
| Power lamp is not lighten when turning on the power switch | Is the power cord plug connected well? Isn't the fuse broken? Trouble of power switch | Please inset the plug of power cord in outlet correctly. Please replace it to designated fuse. If it goes on continuously, then ask repair. Please ask repair |
| The motor does not work. | Is the cord of motor connected well? Isn't the chuck opened ? Internal Circuit's problem in the control unit Have you used a handpiece for a long time under high-load ? | Please insert the cord of motor in outlet correctly Please fasten the collect chuck by turning the handle to left-handed screw. Please ask repair Turn off the control unit, please keep it at cool place for 10 minutes and work it again. |
| Foot pedal does not work. | Is its cord connected ? Isn't the 'Hand mode' set up instead of 'Foot mode'? | Please insert the plug of foot pedal in outlet correctly. Please change the Hand mode to Foot mode by putting Hand/Food mode button. When Foot mode, LED is not lighting |
| The handpiece makes thundering noise when operating. | Isn't a foreign substance in a collect chuck? Did you use the bur under the unpermitted RPM? Isn't the bur curved? Does the motor make noise continuously? | Please remove it after disassembling the collect chuck. Please adjust the RPM properly after referring to the permitted RPM for the bur Please replace it with a normal bur. Please ask repair. |



- a) Disassemble the front cap by hands.
- b) Take out a spindle assembly.
- c) Disassemble the collet chuck by spanner and wrench packed in a package.

※ The life cycle of chuck is 2~3 years and it is flexible according to workload and loads.

Contact information

MicroNX

Address : 22, Maeyeo-ro 1-gil, Dong-gu, Daegu, 41059 Republic of Korea

If you have a problem, please contact us to the following Telephon or E-mail.

Contact Information

Tel : +82-53-650-1000
 Fax: +82-53-650-1001
 E-mail: micronx@micronx.co.kr

Website

www.micronx.co.kr