

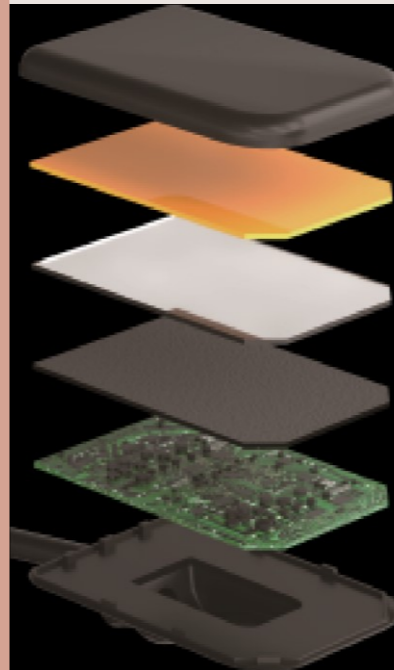


NanoPix

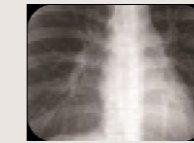
Intraoral X-Ray Sensor



1/10 Cost per patient compared to film
3 s To complete entire imaging process
50000+ Exposures with no quality loss



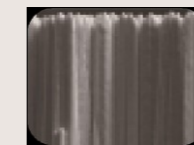
Leading technologies : The 1st time in dentistry



AED Technology (Automatic Exposure Detection)
- from chest radiography
• Compatible with almost all DC and AC X-Ray generators
• Digital images comes automatically when your X-Ray is switched on

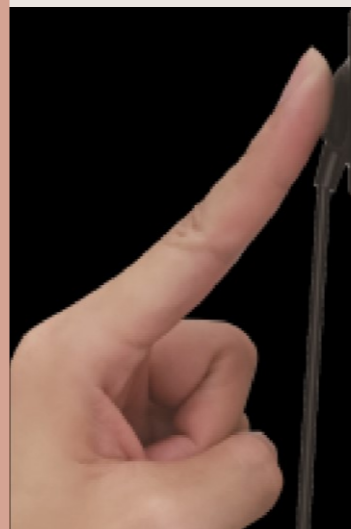


APS CMOS Technology
- from aerospace industry
• High signal-to-noise ratio with maximum details
• Long life and low power consumption



Direct Deposition CSI Technology
- from chest radiography
• Low dose radiation for safety
• Less exposure time but higher resolution

All-in-one
The most economical X-Ray sensor in the world



Unique design



Ergonomic design
Cupped cable connection ensures comfortable finger positioning



Robust cable connection
70000+Bendings RA test passed



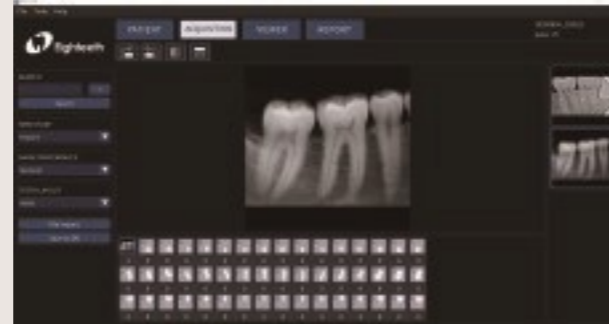
Ultra-thin body design
4.4mm - the thinnest X-Ray sensor

Easy-of-Use software with only 4 steps

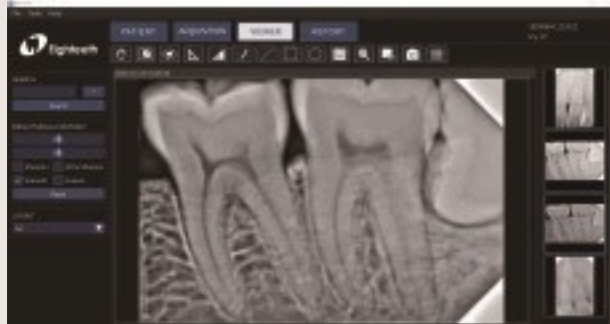
● Step 1. Choose 'Patient'



● Step 2. Image 'Acquisition'






● Step 3. View Image

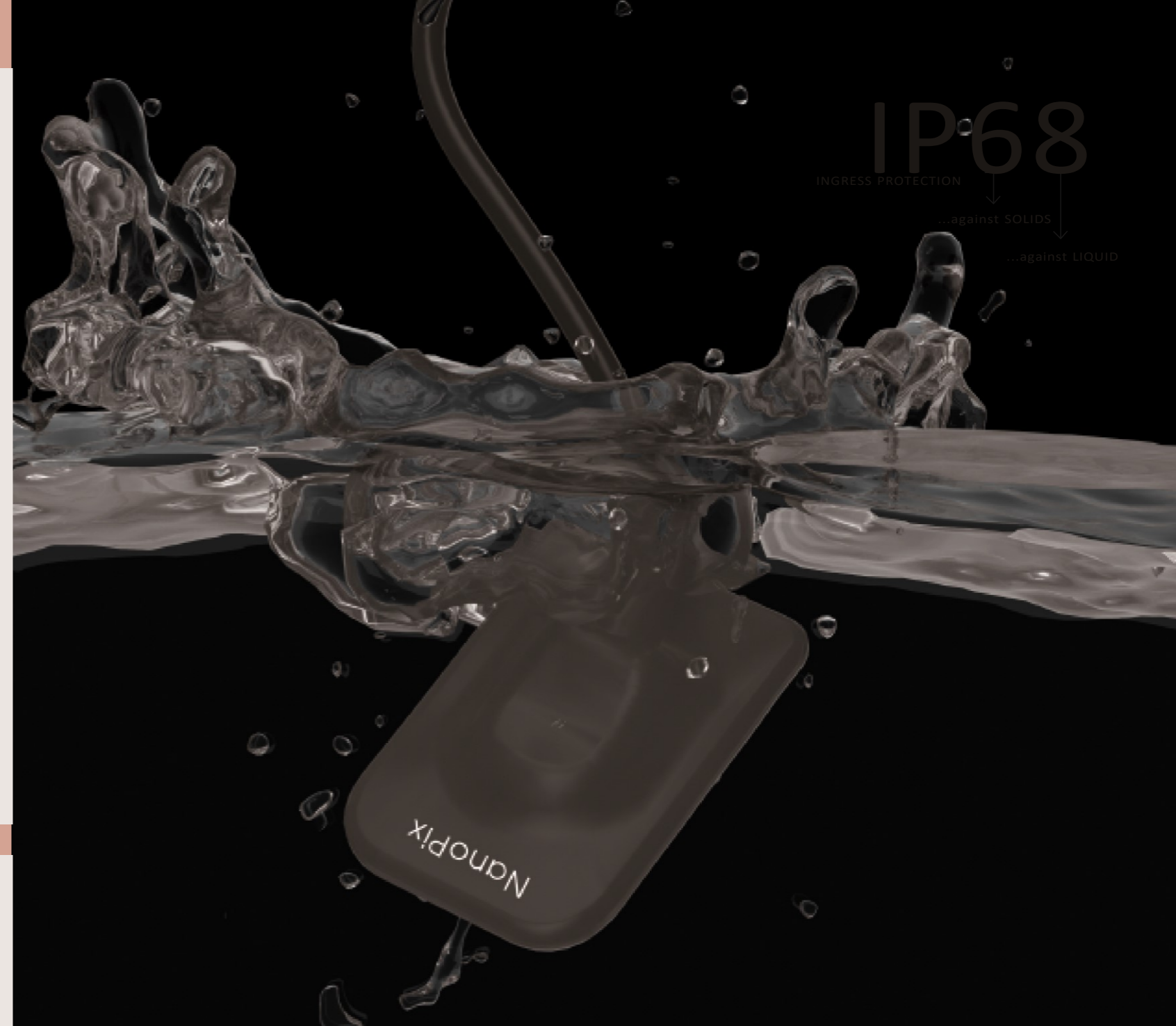


● Step 4. Generate 'Report'



The Complete Image Solution:
excellent combination of
DR Pad & its base

-  pre-installed software
-  multiple USB ports for diverse needs
-  build an instant connect with users



Specifications(available in 2 sizes)

	NanoPix 1	NanoPix 2
Detector Technology	APS CMOS	APS CMOS
Scintillator	CsI	CsI
Pixel Matrix	1000*1500	1300*1800
Theoretical Resolution	25lp/mm	25lp/mm
True Resolution	20lp/mm	20lp/mm
Active Area (mm)	20*30	26*36
Mechanical Size(mm)	25.4*36.8*4.4	30.4*41.9*4.4
AD Conversion(bit)	16	16
Data Interface	USB 2.0	USB 2.0
Protection	IP68	IP68