

# *i-Sensor*

Clearer & More durable



**IDS Denmed**

Experience. Dentistry.

# Durable and Reliable

## 80000+ bending test

i-Sensor is designed to prevent any kind of damages in its everyday use. Based on actual usage and tens of thousands of bending experiments, the product is durable.

Robust CNC shell fusion ultrasonic welding technology brings ultra-lightweight experience and IP68 protection can be immersed in disinfectant liquid to avoid cross infection.



**IDS Denmed**  
Experience. Dentistry.

**IP68**

# Thinnest sensor 4.4mm

With an ergonomically optimized Cut-Corners and 4.4mm thickness, the i-Sensor makes sensor placement easier than ever (plus, the thinner sensor specifically allows for better bitewing radiographs and simplified vertical bitewing acquisition.)

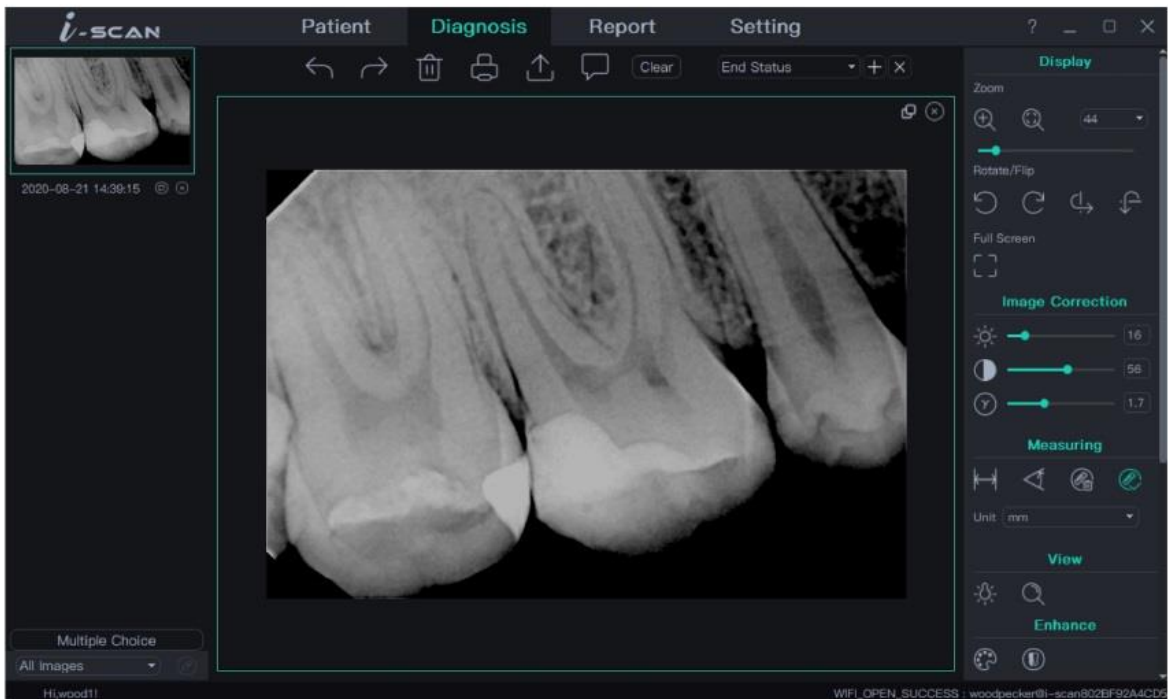


Rounded Corner

# Easy-to-use software

## Smart and powerful software

i-Sensor provides simple and easy-to-operate software, one-click smart installation and use, and equipped with powerful image processing functions, so you can significantly and quickly improve the quality of radiographs.



**One-click  
smart installation**



**User-Defined  
Image Processing Tools**



**Free to use  
and upgrade**



## Accurate and professional imaging quality

25 lp/mm theoretical resolution and up to 20LP/mm measured resolution.

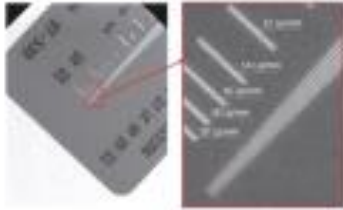


Figure 1: Resolution chart



Figure 2: Dental film

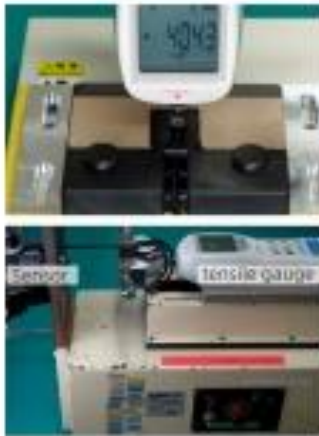
Rounded corner design makes it more durable for patients.



Square Corner

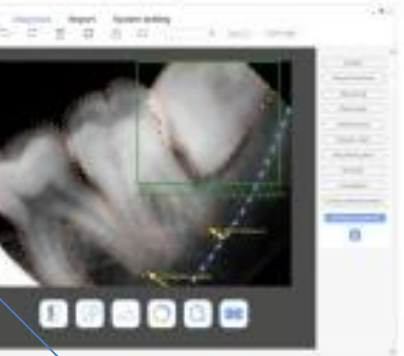
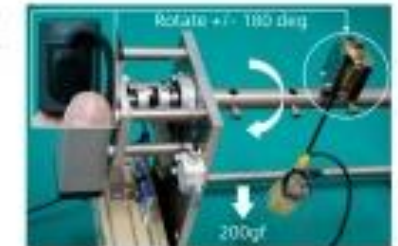


Rounded Corner



## Quality assurance

01. Sensor casing strength test: Point pressure test on the sensor surface. It can withstand a pressure of 40KG, so it is not easy to be damaged when the sensor is pressed by the object, dropped on the ground, or hit other objects.
02. Cable connector bending test: The cable connector is tested for durability, and can be used normally after repeated bending up to 25,000 times.
03. Tensile test of cables: Adopt special plastic casing design and special bonding technology of cable and casing, so the cables on the sensor can withstand up to 100 N tensile force without damage, greatly increasing the sensor's service life.



AI imaging software Ai-Dental.  
Powerful image processing, intuitive and friendly operation interface, and AI intelligent diagnosis function.

01. A wisdom tooth needs to be extracted.
02. Neural tube position and distance from apex.

## SPECIFICATIONS:

	i-Sensor H1	i-Sensor H2
TYPE		
SIZE	25*36.8*4.4	30.4*41.9*4.4
TECHNOLOGY	APS CMOS	APS CMOS
SCINTILLATOR	CsI	CsI
PIXEL MATRIX	1000*1500	1300*1800
THEORITICAL RESOLUTION	25 lp/mm	25 lp/mm
TRUE RESOLUTION	20 lp/mm	20 lp/mm
ACTIVE AREA	20*30	26*30
AD COVERSON (BIT)	16	16
DATA INTERFACE	USB 2.0	USB 2.0
PROTECTION	IP68	IP68